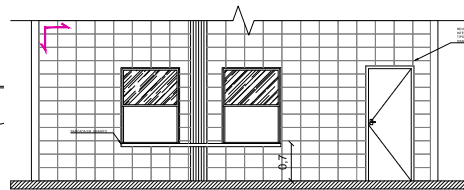
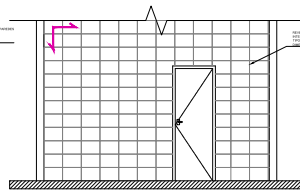


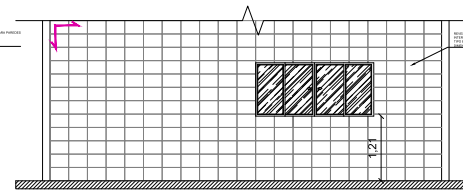
COZINHA  
ESCALA: 1/50



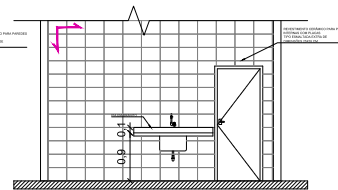
VISTA 1  
ESCALA: 1/50



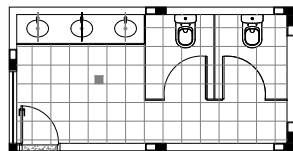
VISTA 2  
ESCALA: 1/50



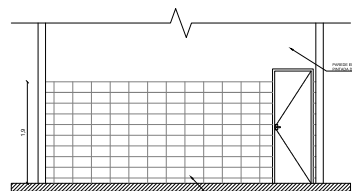
VISTA 3  
ESCALA: 1/50



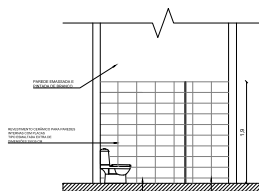
VISTA 4  
ESCALA: 1/50



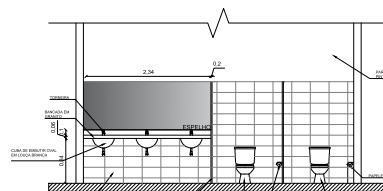
SANITÁRIO FUNCIONÁRIOS  
ESCALA: 1/50



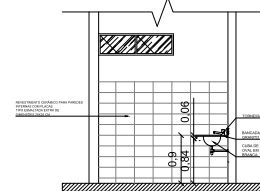
VISTA 1  
ESCALA: 1/50



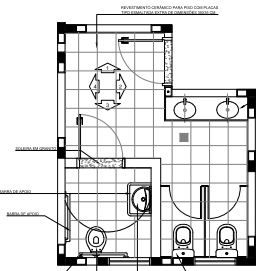
VISTA 2  
ESCALA: 1/50



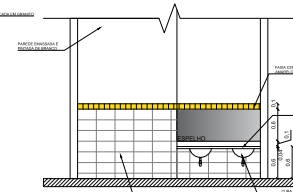
VISTA 3  
ESCALA: 1/50



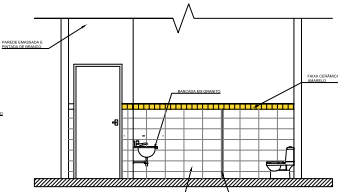
VISTA 4  
ESCALA: 1/50



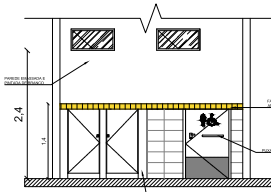
SANITÁRIO MASCULINO  
ESCALA: 1/50



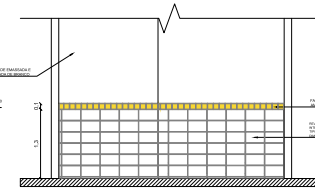
VISTA 1  
ESCALA: 1/50



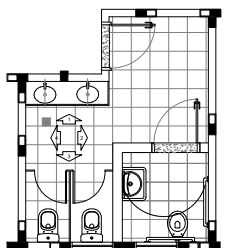
VISTA 2  
ESCALA: 1/50



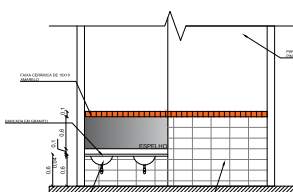
VISTA 3  
ESCALA: 1/50



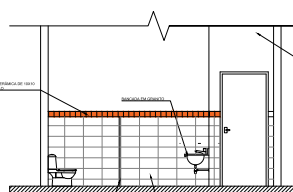
VISTA 4  
ESCALA: 1/50



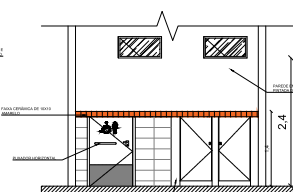
SANITÁRIO FEMININO  
ESCALA: 1/50



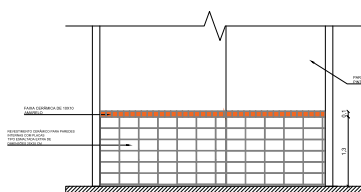
VISTA 1  
ESCALA: 1/50



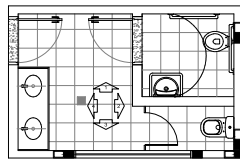
VISTA 2  
ESCALA: 1/50



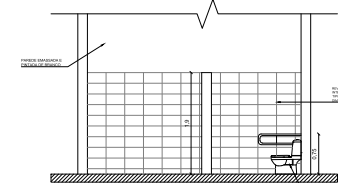
VISTA 3  
ESCALA: 1/50



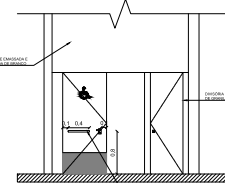
VISTA 4  
ESCALA: 1/50



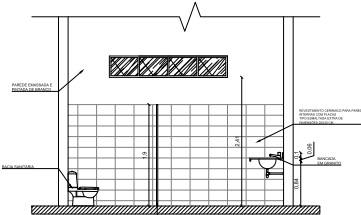
SANITÁRIO PROFESSORES  
ESCALA: 1/50



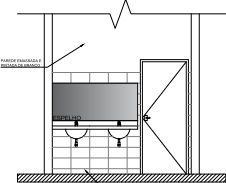
VISTA 1  
ESCALA: 1/50



VISTA 2  
ESCALA: 1/50



VISTA 3  
ESCALA: 1/50



VISTA 4  
ESCALA: 1/50

DETALHAMENTO ÁREAS MOLHADAS

FOLHA:  
08/09



MUNICÍPIO DE CARAPICUÍBA  
SECRETARIA DE DESENVOLVIMENTO URBANO  
SETOR DE PROJETOS

OBRA:  
EMEI LUZ DO AMANHÃ

LOCAL:  
PARQUE GABRIEL CHUCRE - VILA GUSTAVO CORREIA

RECURSO/CONVÊNIO:  
PRÓPRIO

ART/RRT:

SITUAÇÃO ENTORNO



ÁREAS

DO TERRENO.....1.642,00m²  
DA CONSTRUÇÃO EXISTENTE.....476,96m²  
DA AMPLIAÇÃO.....88,71m²

Maurício Guimarães  
ARQUITETO E URBANISTA  
CAU-SF nº A177707-6

DATA:  
30/11/2022

ESCALA:  
INDICADA NO PROJETO

DESENHO ELABORADO POR:  
Victor Augusto Alves

REVISÃO NÚMERO: 01

MÊS: Novembro